

Your Chevelle CD Demo

Notes:

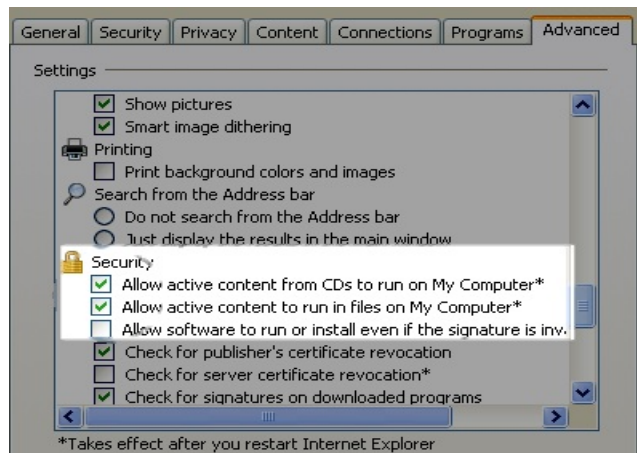
If CD does not automatically start:

1. Click **Start > Run** and navigate to (cd drive):\index.html
..or..
2. Open Internet Explorer and click **File > Open > Browse** and navigate to (cd drive):\index.html

This CD is Internet-browser based. Recommended screen resolution set to a minimum of 1024x768 with 1280x1024 or higher being preferred. It has been tested with Internet Explorer 8-11, under Windows 2000, Windows XP Pro w/Service Pack 2 & 3, Windows Vista, Windows 7, and Windows 8 operating systems as well as MACs.

The CD has also been tested with Google Chrome, Mozilla Firefox, Opera, and Safari browsers.

If you use a pop-up blocker the pop-up windows showing larger photos may not work properly and you may need to disable the feature. Security features in Internet Explorer V7 may also cause the CD to not operate properly and display a warning concerning Active Content. This can be resolved by allowing active content to be run from CDs. In Internet Explorer, select **Tools > Internet Options** then the **Advanced** tab. You must check the box next to "Allow active content from CDs to run on My Computer". If you copy the contents of the CD to your local hard drive then the next box "Allow active content to run in files on My Computer" must be checked. Java must also be enabled.



If you discover an error in an internal link, a photo that does not display, spelling errors, etc. please be as specific as possible about the location when reporting these problems. If there is a problem on an individual page you can right-click the page, select **Properties**, and determine the page name to report the problem.

Thank you again for your purchase and I hope the material presented meets many of your expectations.

Please visit <http://www.chevelledemo.net/instructions/index.htm> for a review of the CD operating instructions and <http://www.chevelledemo.net/news/news.htm> for information on updates. There is no need to register your CD serial number when purchased directly from ChevelleCD.net, your information is automatically added to our database. This CD contains the latest updates. If you find errors, broken links, or have suggestions to make the CD better, please contact us through the <http://www.chevelledemo.net> website.

You may also install the contents to your hard drive for faster response. Using your Windows Explorer, locate the file named **cddemo.exe** on the root of the CD. Double-click the **cddemo.exe** file and follow the instructions. This installation will also place a convenient shortcut on your desktop.

If you have a MAC, locate the **cddemo.zip** file.

Installation instructions are on the next page.